

## **Medical Quiz**

### **A Lady with Mucous Discharge per Rectum**

Khalid A Al-Sindi, MD, MRCPATH\*    Nanik A Sakhani, MD, FPCS\*\*

A 55-years old female presented with a vague abdominal pain, body weakness, nausea, and episodes of mucoid diarrhea for at least one month. Ultrasound and CT Scans were done. Both revealed a cystic mass on the right colon with an incidental finding of calculous cholecystitis. A right hemicolectomy was performed and on opening the bowel, a thin walled cystic mass full of gelatinous content was found. The appendix was mildly dilated but not inflamed (figure 1).

Microscopically, the cystic mass was formed by a thin fibrous wall and the overlying mucosa was ulcerated. The proximal part of the appendix was partially fibrosed and the lining of the distal end is shown in figure 2.

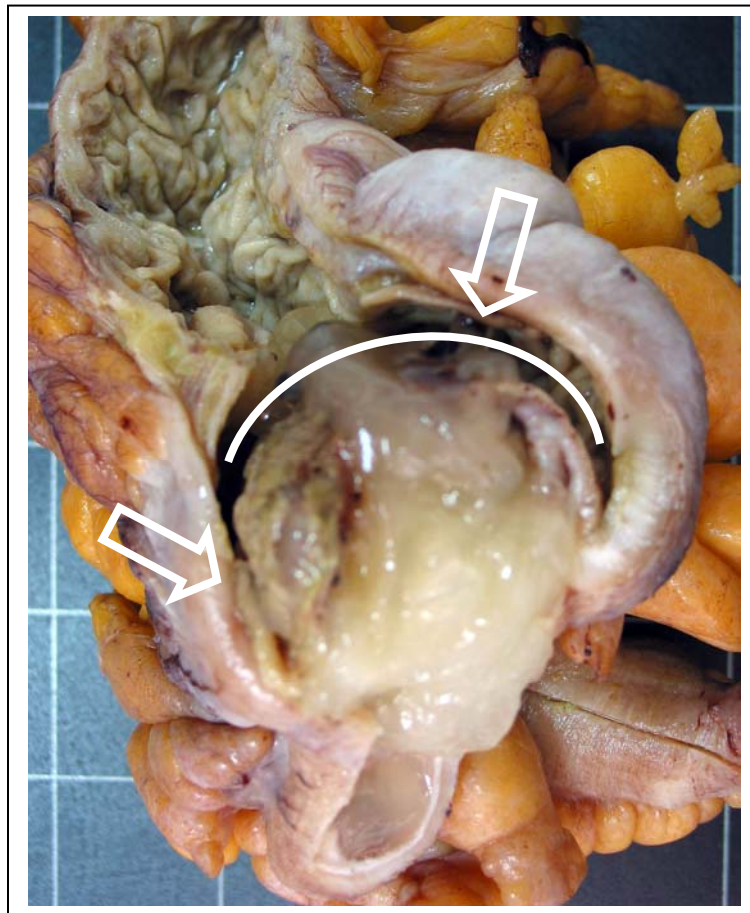


Figure 1: Macroscopic appearance of the cystic mass

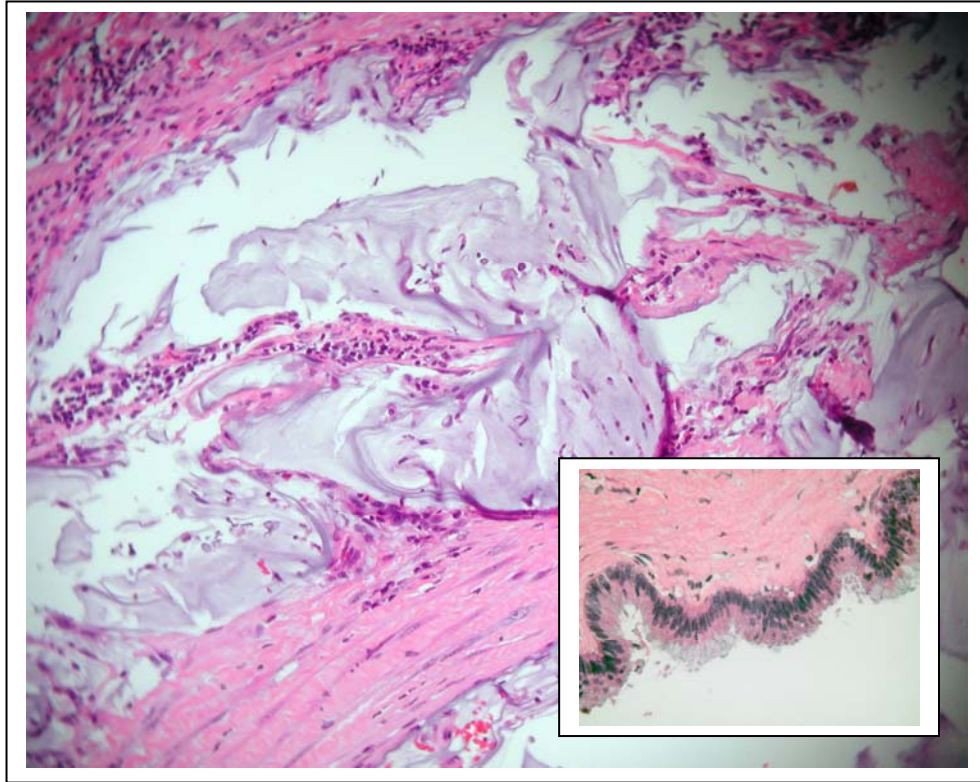


Figure 2: Cystic mass, Part of the fibrous wall and content.  
Insert: Appendiceal lining epithelium.

- Q1. Name the structure involved and any other significant abnormality?
- Q2. What are the clinical differential diagnosis and the most likely one?
- Q3. What are the clinical implications of such disease?