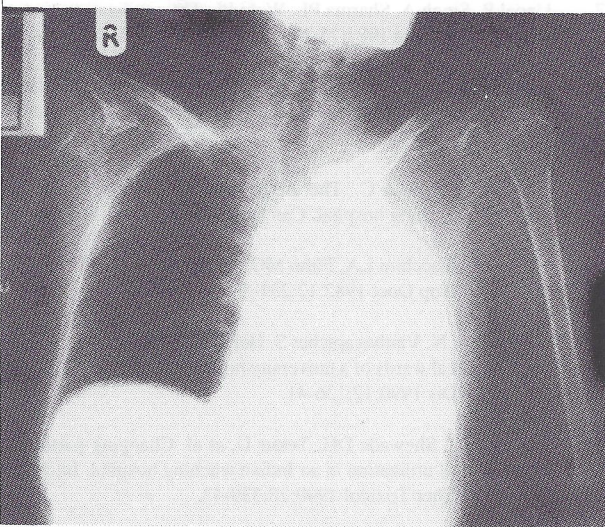


# MEDICAL QUIZ

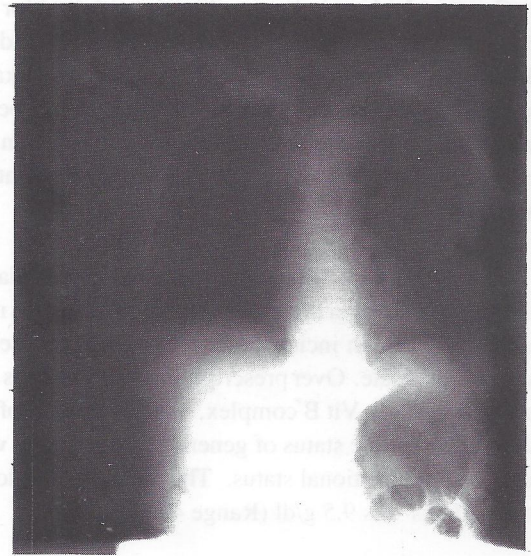
Najeeb Jamsheer

## CASE 1

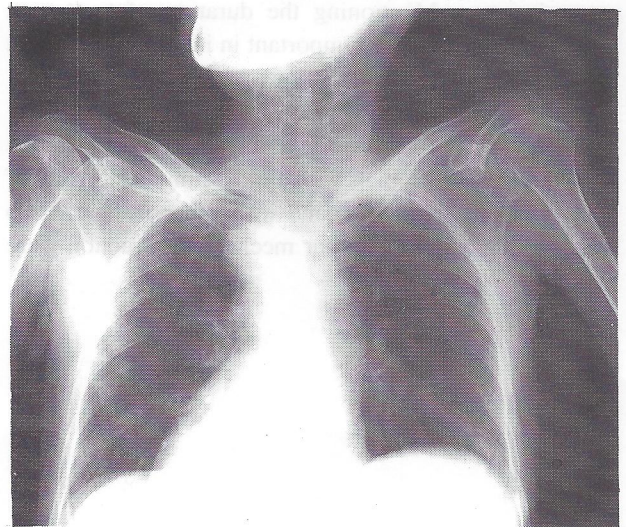
A 55 year old lady was admitted to the hospital with acute exacerbation of her chronic asthma. The first chest radiograph was taken on admission. The second one a few days later when her condition suddenly deteriorated (she became more dyspneic and cyanosed). The third film was taken 2 days after the second film while she was being prepared for bronchoscopy. There was no internal intervention. (Fig. 1, 2 & 3)



**Figure 2**



**Figure 1**



**Figure 3**

- Q 1. What is the radiographic abnormality on the second film ?
- Q 2. What is the most likely cause for this abnormality ?

## CASE 2

This is the plain abdominal radiograph (Fig. 4) of a 30 year old gentleman who presented to the Accident and Emergency Department of Salmaniya Hospital

with painful retention of urine of a few hours duration and a few days history of dysuria and pelvic discomfort.

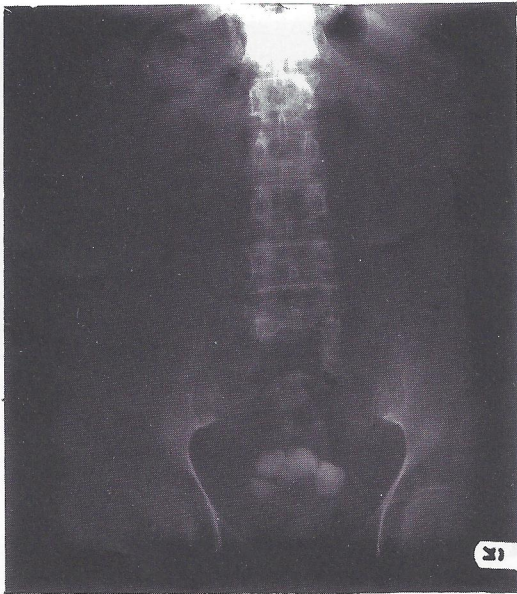


Figure 4

### CASE 3

A 65 year old gentleman has several years history of "prostatism". Multiple radiopaque "shadows" in the pelvis are shown on the abdominal radiograph (Fig 5), taken the same day of his visit to the clinic.

- Q1. What are these ?
- Q2. Formulate a short list of major aetiological groups in situations such as this, in males and females, adults and children, and give an example of each.

Q. What is(are) the abnormality(ies) responsible for this patient's symptoms ?

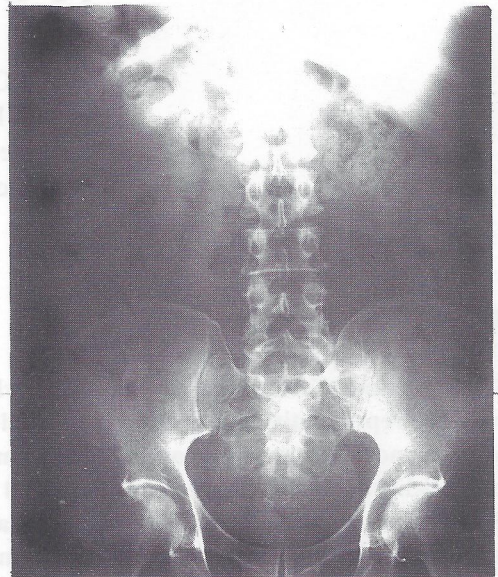


Figure 5