

## Medical Quiz

Saeed Alhindi, MD, CABS, FRCSI\*

Nine month old male patient presented to the accident and emergency room with history of abnormal abdominal pain and intermittent crying accompanied by a drawing up of the knees. Physical examination revealed a palpable sausage-shaped mass in the mid-abdomen. The patient had the following radiological tests, see figure 1 and 2.

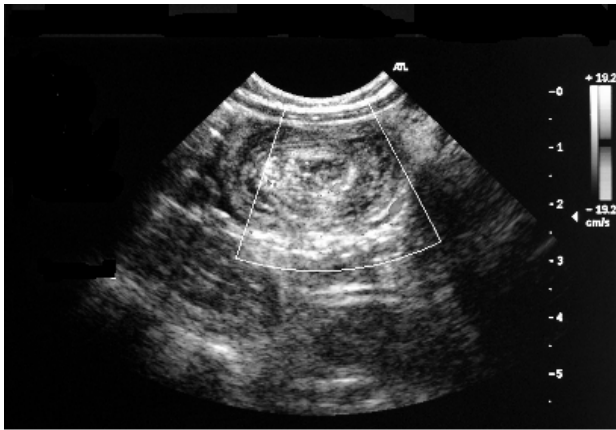


Figure 1

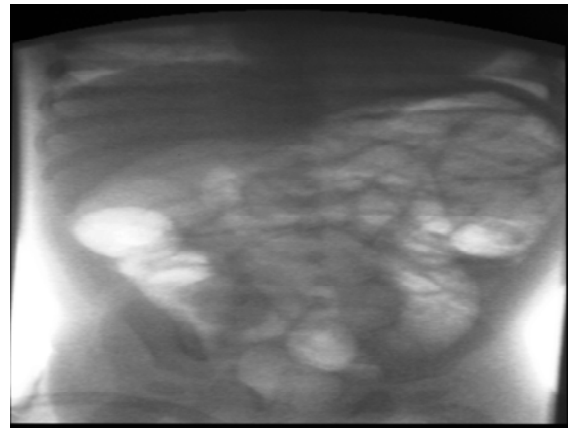


Figure 2

**Please answer the following questions:**

- Q.1.** What is your diagnosis?
- Q.2.** Describe the signs in both radiological tests.
- Q.3.** Mention one contraindication to do the radiological test (figure 2).